



# CONTRACTOR BODY



**BUILT TO THE  
TOUGHEST STANDARDS:  
YOURS.**

# FEATURES AND OPTIONS CONTRACTOR BODY



## CONTRACTOR BODY

You know Reading Truck for its commitment to customers, innovation and its more than 70 years of manufacturing excellence. We have taken that engineering expertise and your feedback to deliver a Contractor Body — expanding our offering of durable work truck bodies built with long-lasting American craftsmanship. Our Contractor Body is built to withstand the toughest conditions with its A60 galvanized steel construction and a powder coat finish.

Ready to work the way you want.

# FEATURES

## 1 FLOOR MATERIAL

Made from 1/8" HRS treadplate steel and mounted on 16" crossmember centers for long-lasting durability.



## 2 GATES

Seventeen-inch high rear and side gates fold down to provide extra workspace to make quick work of loading and unloading cargo.

## 3 REAR APRON

Designed as a one-piece bolt-on apron for easy replacement. The apron houses the taillights, marker lights and license plate.

## 4 LED LIGHTS

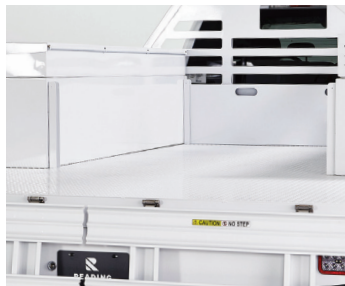
LED lights for clearance, marker, stop, tail, turn and reverse lights, offer long life and low maintenance.

## 5 TAILBOARD

Customize your cargo space with a movable tailboard that can create one large storage area or two smaller ones.



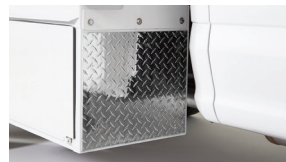
Tailboard position 1



Tailboard position 2

## 6 GRAVEL GUARDS

Prevent stones and other debris from damaging your truck's panels.



## 7 SPACEMAKER®

Offers additional locking storage that can be mounted directly on top of toolboxes.



## 8 MATERIAL RACK

A forklift loadable material rack that extends the full length of the truck featuring removable/movable storage bars with wire lock pins to hold the bars securely in place. Rear bar swings out for easy access to the rear of the body.

## 9 TOOLBOXES

Toolboxes, with stainless steel T-handle locks, provide lots of open storage for easy access to your tools and equipment. A shelving unit (one included per box) can be easily moved from side-to-side.



## 10 BULKHEAD

A 42" tapered bulkhead with openings to improve visibility from the cab.

## 11 HITCH AND ICC

A 20,000 lb. ICC Class V hitch with a 2½" receiver tube and ICC underride comes standard.

## 12 SHOVEL BOX

Ideal for storing longer pieces of equipment with easy-to-reach open access and can be mounted directly on top of toolboxes.

## COLOR

Body and bolt-on components available in white.



# WARRANTIES AS STRONG AS OUR BODIES.

Your truck is the heart of your business. When it doesn't perform, you can't perform. We back our work truck bodies and installations with some of the strongest, longest warranties in the business. Product registration is fast and easy on our website, [readingtruck.com](http://readingtruck.com).



**CONTRACTOR BODY**





**INSTALLATION\***



\* when performed at a Reading Truck center



825 E. Wyomissing Blvd.  
Reading, PA 19611

[readingtruck.com](http://readingtruck.com)

Sold and Serviced Locally by



© 2025 The Reading Truck Group, LLC, Reading, PA. All rights reserved.  
Version Number L110-E (6/2025)

The models shown may include optional features and accessories that are not part of the base body. All dimensions subject to plus or minus tolerance of ¼" and all dimensions and specifications are subject to change without notice. Some items displayed in photographs are optional. Aluma-Fill, Dual-Pro, Extend-A-Shelf, Latch-Matic, Reading Truck, Redi-Dek, and Spacemaker are registered trademarks of The Reading Truck Group, LLC, (DBA Reading Truck) in the United States and some foreign countries. Trademarks of other firms are property of their respective owners.